

PART OF SW 1/4 SEC. 15, T.5N., R.1W., S.L.B. & M. OAK CREEK ESTATES PHASE – 1

225

LOTS 1–16

IN SOUTH OGDEN CITY

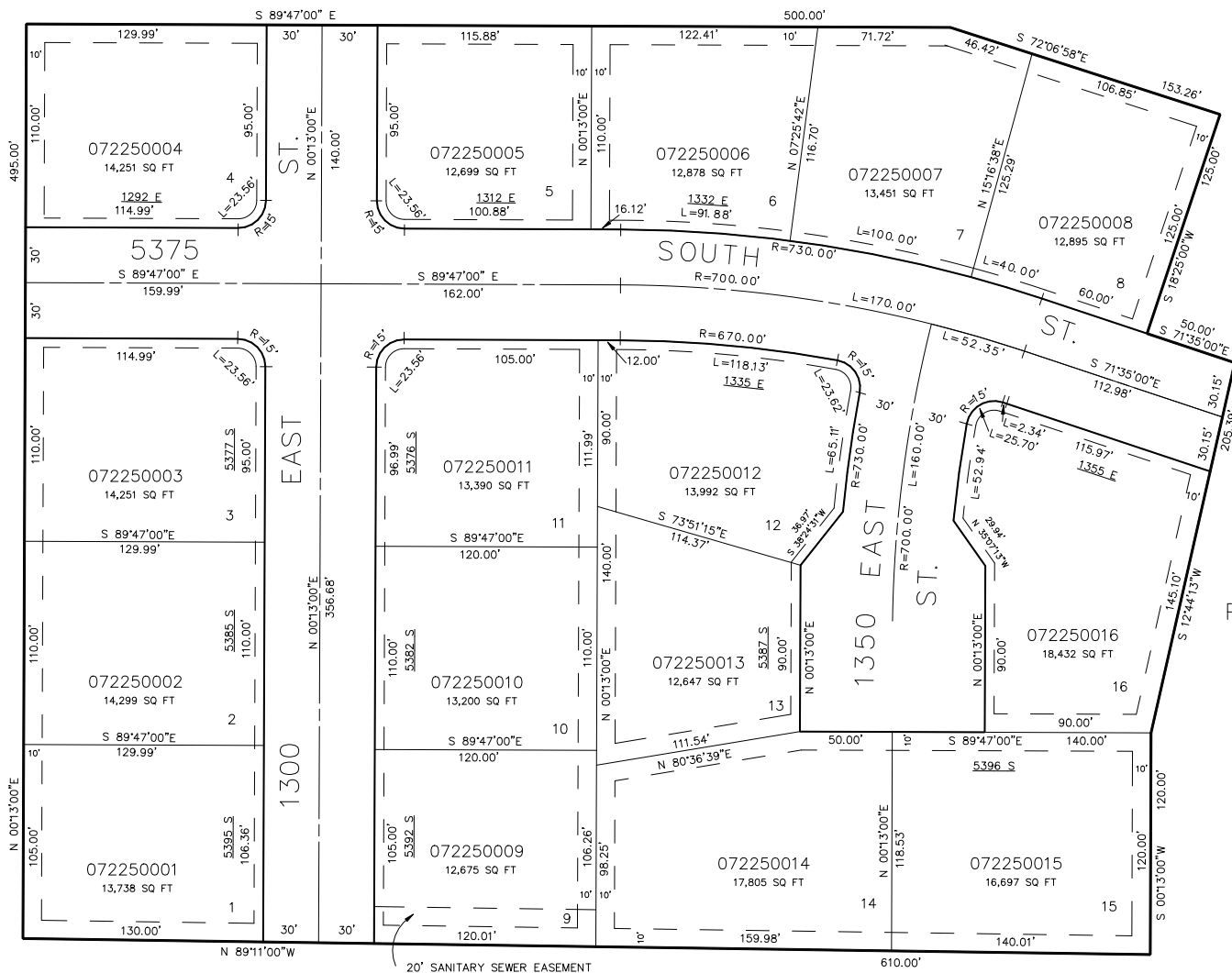
TAXING UNIT : 27

SCALE : 1" = 50'

SEE PAGE 4

SEE
PAGE
237

SEE
PAGE
4



SEE PAGE 6

SEE PAGE 4

10' UTILITY EASEMENTS EACH SIDE OF
PROPERTY LINE AS INDICATED BY
DASHED LINES. EASEMENTS TO BE
USED FOR IRRIGATION, WATERLINES,
DRAINAGE, SANITARY & STORM SEWERS,
POWERLINES, & PUBLIC UTILITIES.
FRONT PROPERTY LINE UTILITY
EASEMENTS ARE 5' WIDE.

FOR COMPLETE ENG. DATA SEE
ORIGINAL DEDICATION PLAT IN
BOOK 21, PAGE 20, OF RECORDS.